

# DOT PEEN MARKING MACHINE

## e10 c153



### ROBUST AND RELIABLE

- Base in aluminum foundry
- Mechanics and stylus assembly designed for intensive use



### ERGONOMICS AND COMFORT

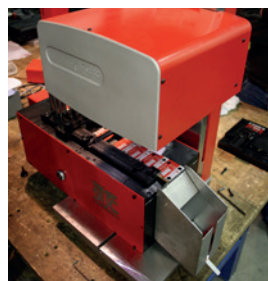
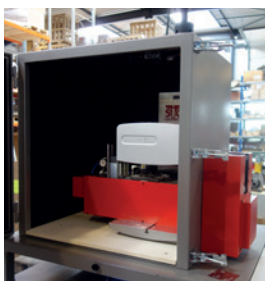
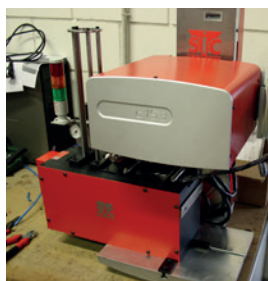
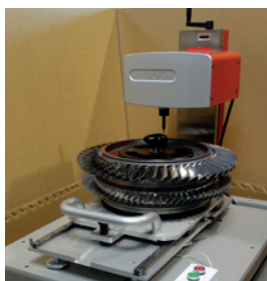
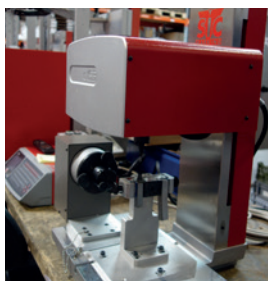
- Counter built into the column to memorize the positions
- LED lighting for visual comfort



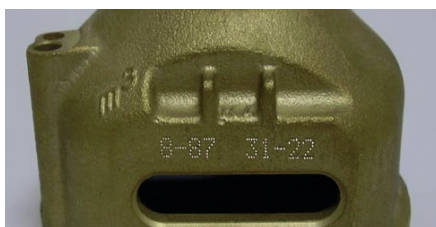
### SPEED AND PRECISION

- Up to 3000 parts per day
- Axis accuracy (0,02mm)

## APPLICATIONS

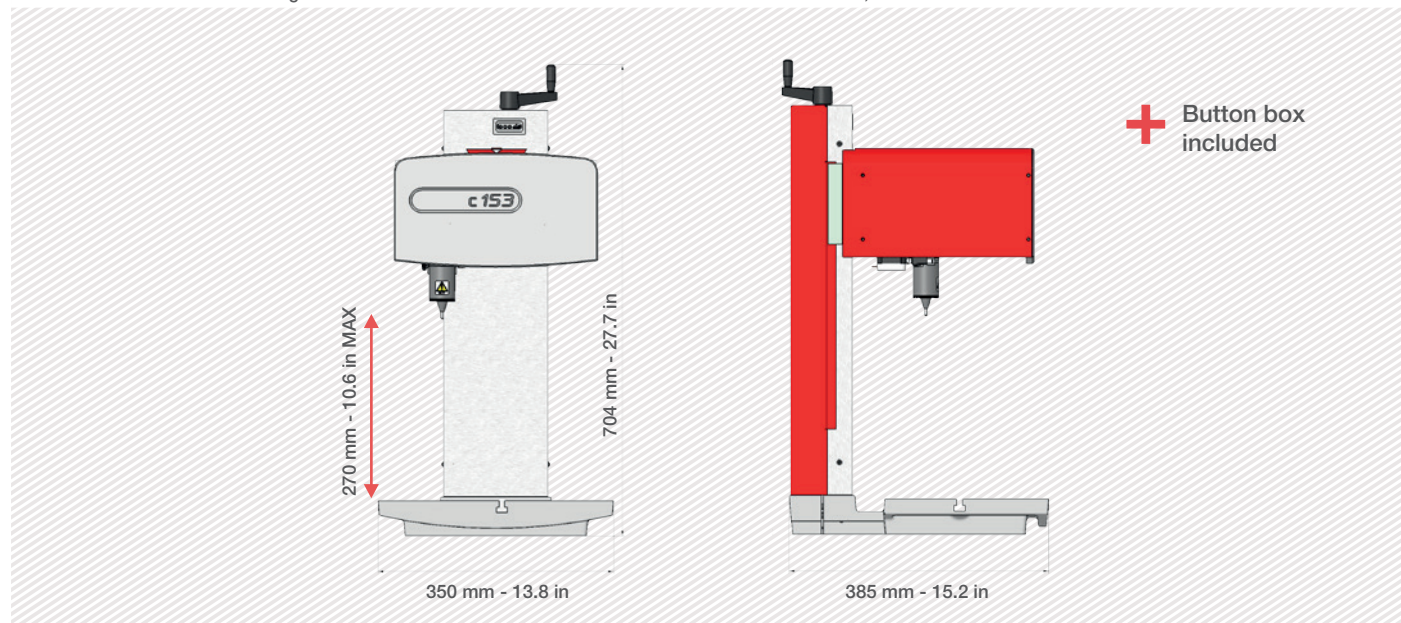


## DOT PEEN MARKING EXAMPLES



# TECHNICAL & MECHANICAL FEATURES

e10 c153	
Marking window	160 x 100 mm - 6.3 in x 3.9 in
External dimensions	385 x 350 x 704 mm - 15.2 x 13.8 x 27.7 in
Weight	28 kg - 61.7 lbs
Stylus	Tungsten carbide 60 mm - 2.4 in
Column stroke	270 mm - 10.6 in max.
Machine / controller cable length	2,5 m - 6.5 ft



## OPTIONS



Rotary axes

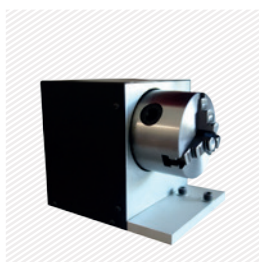


Plate support



Tag feeder



Datamatrix reader



Wireless barcode reader



Maintenance kit



Wide range of stylus



Starting cycle pedal

Please consult us if a specific configuration is not published in the table attached. SIC Marking designs customized and turnkey solutions for all industrial sectors. Our design offices produce machines in compliance with your specifications and your industrial standards.

# E10 CONTROL UNIT

## The e10 controller

- Color screen
- USB Port: to easily upload / download your marking files
- Fully programmable
- Standalone (no PC needed)
- Membrane protected industrial Keyboard
- IP40 waterproof box (no opening or fan)



+ Multiple connectivities



+ Color screen



+ USB Port



## Technical & electronic features

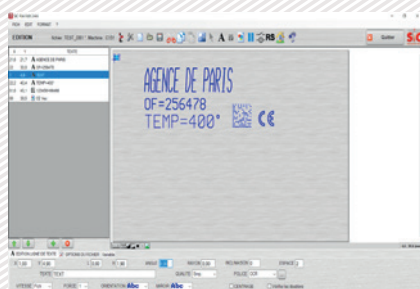
e10 Controller		Communication	
Dimensions	322 x 380 x 112 mm - 13.7 x 15 x 4.4 in	Communication ports	RS232, RS422, USB, RS485 Profibus, TCP/IP, Ethernet/IP
Weight	5 kg - 11lbs	Inputs-outputs	8/8
LCD screen resolution	480 x 272 pixels	External keyboard input	USB
Keyboard	Qwerty integrated, protected by membrane	PC software	Creation of marking files, transfer controller / PC or USB key
Power	300 Watt	Optional communication cards:	
Power supply	Single phase, 85 to 260 VAC, 50 to 60 Hz		
Controlled axes	2 (optional 3rd / 4th axis card)		
Operating temperature	From 5 to 40°C		

Ethernet TCP



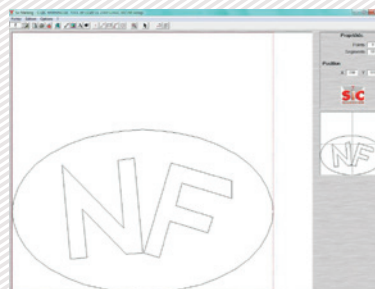
## PC UTILITIES

### File editor



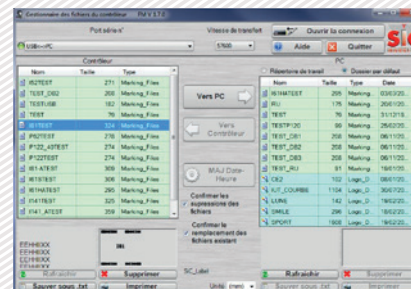
+ Creation or modification of files on PC.

### Creation of logos



+ Creation of vector and matrix logos.

### Creation of logos



+ Backup and file transfer utility.



# E 10 RANGE SOFTWARE

## Software features

Text function	Incrementation, date codes
Logos	Download from a PC or USB key
Datamatrix	Up to 348 characters, 48 x 48 dots
Fonts	Arial, Comic, Comic_B, Courier, OCR, OCR_BOLD, OCRA, 4x6
Style	Angular, Radial, Inverse, and Mirror
Character Size	From 0,1 mm to 99 mm (limited following marking window)
Depth	Up to 0,3 mm (according to the material)
Resolution Between Dots	0,05 mm MAX
Password	2 security levels
History function	Exportable Excel file
Help with maintenance	Auto diagnosis
Available languages	17



Graphic view



Edit menu

AFFECTATION DES I/O		
Num	Entrée	Sortie
1	ARRET	Cycle
2	DEPART	Dernier
3	Sel. Fich	Erreur
4	Sel. Fich	Pause
5	Sel. Fich	Prêt
6	Sel. Fich	PasPièce
7	Sel. Fich	Pièce
8	Sel. Fich	Usure

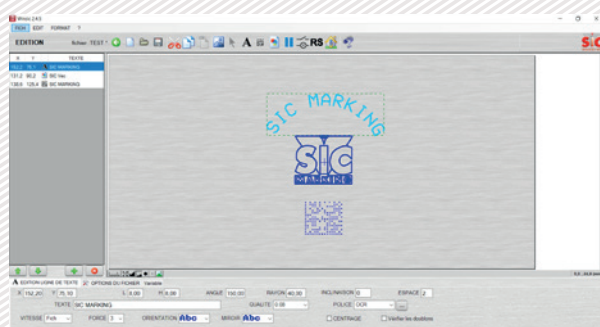
STATISTIQUES CONTROLEUR			
Déplacements		Mémoire	
0 Cycles		33 Fichiers	
0 Caractères		17959 o. Utili.	
AXE X	0.0 m	46409 o. Libres	
AXE Y	0.0 m	27 % Utilisées	
AXE Z Num.	0.0 m		
Impacts			
F1:	0	F4:	0
F2:	0	F5:	0
F3:	0	F6:	0
F7:	0	F8:	0
F9:	0	F10:	0

PC software for directly controlling the marking machine.  
Available functions:

- Editing of marking files
- Input / output management
- History function and anti duplicates
- Datamatrix ECC200 and UID
- ...

# OPTIONAL WINSIC SOFTWARE

WINSIC is a PC software for direct control of the marking machine.



+ Built-in logo design utility

+ Database Management (Excel, Access, txt)

+ Insertion of background images

