

OPTIONS



Cart on battery



Hook and balancing system



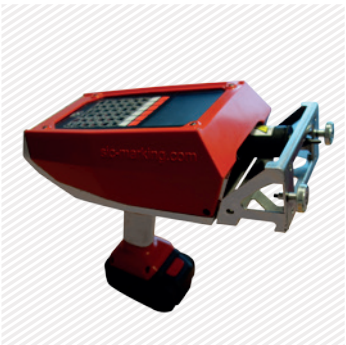
Column base



Booster card for deep marking



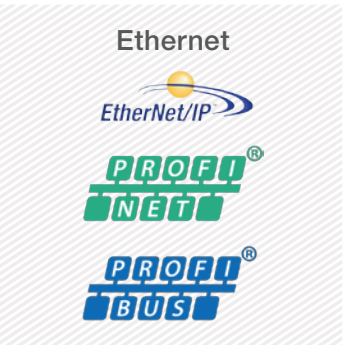
Magnetic front plate



Front plate with permanent magnets



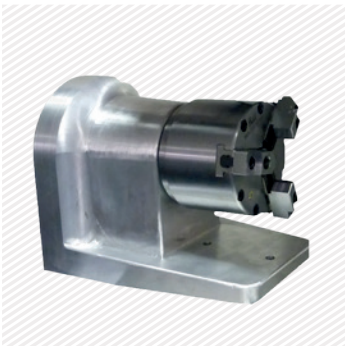
Reduced and adjustable front plate



Communication cards for e10 controller



Maintenance kit



Rotary axis



Wireless barcode reader

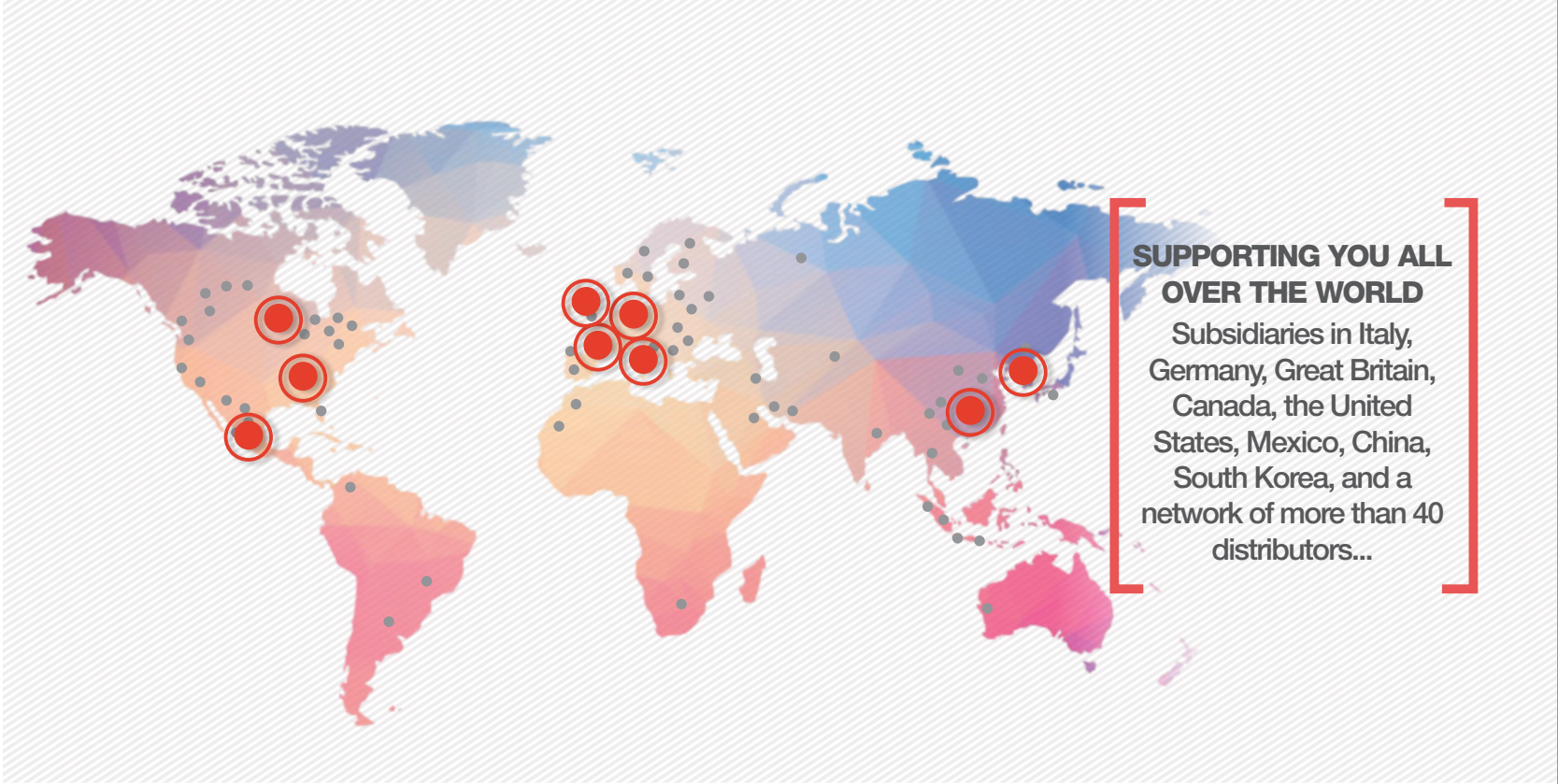


Datamatrix reader

	e1p63c	e1p123	e10p63	e10p123	e-mark	e-mark XL
Cart on battery		•	•	•		
Hook and balancing system	•	•				
Column base	•	•	•	•		
Booster card for deep marking			•	•		
Magnetic front plate	•				•	
Front plate with permanent magnets	•				•	
Reduced and adjustable front plate	•				•	
Communication cards			•	•		
Maintenance kit	•	•	•	•	•	•
Rotary axis	•	•	•	•	•	•
Wireless barcode reader	•	•	•	•	•	•
Datamatrix reader	•	•	•	•	•	•

Please consult us if a specific configuration is not published in the table attached.

SIC Marking designs customized and turnkey solutions for all industrial sectors. Our design offices produce machines in compliance with your specifications and your industrial standards.



**SUPPORTING YOU ALL
OVER THE WORLD**
Subsidiaries in Italy,
Germany, Great Britain,
Canada, the United
States, Mexico, China,
South Korea, and a
network of more than 40
distributors...

SIC MARKING, A GLOBAL SPECIALIST IN
MARKING AND TRACEABILITY SOLUTIONS.

SIC Marking is an international group developing permanent marking solutions and automatic reading systems (datamatrix) for the traceability of industrial components. SIC Marking offers a complete range of dot peen, scribing and laser marking machines.

With 30 years of experience, SIC Marking develops traceability applications for a wide range of materials such as steel, alloys, stainless steel, titanium, aluminum, and plastics. Today we work with professionals in various industries such as: automotive, aerospace, metallurgy, mechanical engineering, plastics processing, railway, medical, construction, defense...

With an experienced, responsive and involved team, SIC Marking offers a complete range of standard products, and custom machines to meet all your needs.



SIC Marking is certified ISO 9001: 2008.

2016/06 SIC Marking® reserves the right to modify equipment specifications at any time - The document is not contractual.

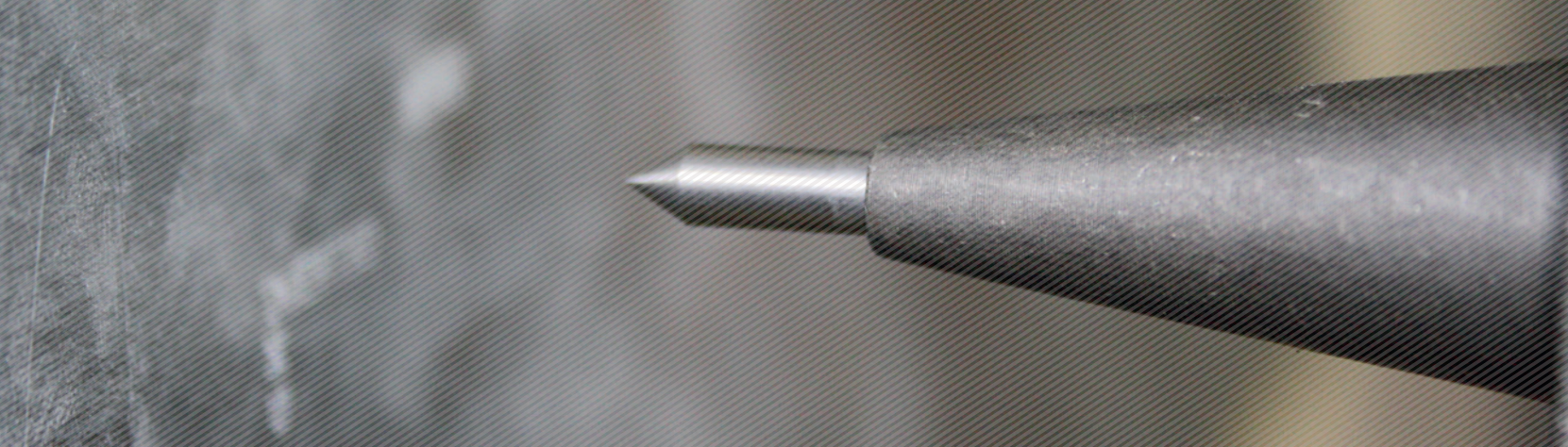


DOT PEEN
PORTABLE RANGE

Catalog



Mark today, identify tomorrow



DOT PEEN TECHNOLOGY : FAST, EFFICIENT MARKING ON ANY MATERIAL!

Dot peen marking works by electromechanically striking a carbide or diamond stylus assembly against the surface of a part to be marked.

The result is a succession of dots to create digits, text, logos, and 2D data matrix codes. Each dot is the result of a pulsed current that runs through a solenoid, punches a magnet toward the surface, and subsequently returns the stylus to its starting position, awaiting the next pulse. Because each pulse occurs in only a fraction of a second, an entire 2D data matrix code, for example, can be completed in seconds (depending on the size). Frequency can be adjusted by controlling the speed of the X and Y axes movements.

What makes SIC Marking's dot peen technology so unique is the constant measurement of the electrical current between each pulse. This allows for constant, precise control of the impact consistency.



PORTABLE : LIGHT AND BALANCED

Our portable range offers lightweight, totally mobile, and ruggedly constructed marking systems that are ideal for marking heavy or difficult-to-access parts. Our portable range has been specially designed for marking almost any sized part, no matter how small, bulky, or awkwardly shaped.

These high speed, powerful marking systems will work on any material, including plastics and hardened steel up to 62 HRC, all with a constant level of quality and accuracy. Ownership and operational costs are very low, and no consumables are required for use.

+ ROBUST AND RELIABLE

- Designed for industrial environment
- Cast aluminum body

+ SIMPLE AND USER-FRIENDLY

- Lightweight
- Mobile, ergonomic, and versatile
- Simple programming

+ WIDE RANGE OF OPTIONS

+ HIGH PERFORMANCE

- 100% electromagnetic technology
- Constant precision and quality
- High speed marking
- Powerful integrated software
- Ideal for marking heavy or bulky parts, up to 62HRC

+ LOW COST OF OWNERSHIP

- Low initial investment
- Reduced maintenance
- No consumables



SUITABLE FOR
MARKING
2D CODES

E1 PORTABLE RANGE



COMPACT SYSTEM



GOOD VALUE

e1 p63c Marking window - 60 x 25 mm
2.4 x 1 in

LIGHT AND COMPACT

- Only 2,6 kg
- Light and robust cast aluminium body and handle
- Transport suitcase
- Intuitive Software e1



e1 p123 Marking window - 120 x 25 mm / 120 x 40 mm
4.7 x 1 in / 4.7 x 1.6 in

LARGE MARKING WINDOW

- Light and robust cast aluminium body and handle
- V-shaped front plate with quick stylus / part distance adjustment system
- Intuitive software e1



e1 controller

- USB port (allows you to easily transfer your marking files)
- Fully programmable
- Small size
- Marking diversity (DataMatrix, circular, alphanumeric, logos ...)
- Membrane protected industrial keyboard



+ Ergonomic handle



+ USB Port



+ Color screen



+ Transport suitcase
for e1p63c



E10 PORTABLE RANGE



STRIKING POWER



DATA BASE MANAGEMENT

e10 p63 Marking window - 60 x 25 mm
2.4 x 1 in

POWERFUL AND COMMUNICATING

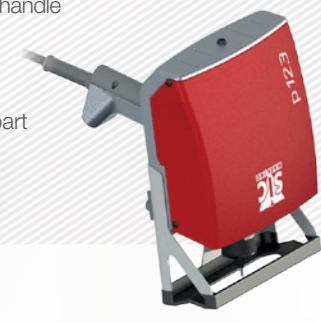
- Only 3,2 kg
- Maneuverable with one hand
- Light and robust cast aluminium body and handle
- Lighting of the work area by LEDs



e10 p123 Marking window - 120 x 25 mm / 120 x 40 mm
4.7 x 1 in / 4.7 x 1.6 in

LARGE MARKING WINDOW

- Light and robust cast aluminium body and handle
- Cable protected by stainless steel spring
- Lighting of the work area by LEDs
- V-shaped front plate with quick stylus / part distance adjustment system



e10 controller

- Color screen
- USB Port: to easily upload / download your marking files
- Fully programmable
- Standalone (no PC needed)
- Membrane protected industrial Keyboard
- IP40 waterproof box (no opening or fan)



+ Multiple
connectivities



+ Color screen



+ USB Port



+ PC software
and utilities



WIRELESS PORTABLE RANGE



ALL IN 1 SYSTEM



MOBILITY

e-mark Marking window - 60 x 25 mm
2.4 x 1 in

WIRELESS BATTERY-POWERED PORTABLE

- Light and robust cast aluminium body and handle
- V-shaped front plate with quick stylus / part distance adjustment system
- Transport suitcase, charger + 2 batteries
- Intuitive e1 software



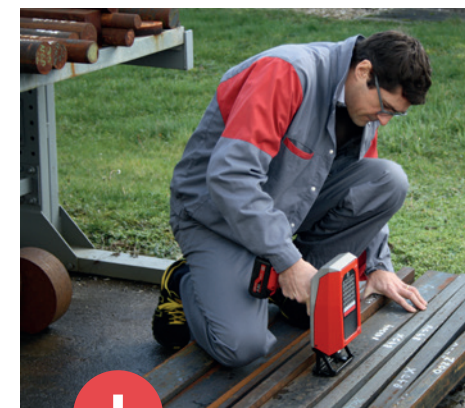
e-mark XL Marking window - 120 x 40 mm
4.7 x 1.6 in

WIRELESS BATTERY-POWERED PORTABLE

- Very large marking window
- Light and robust cast aluminium body and handle
- V-shaped front plate with quick stylus / part distance adjustment system
- Transport suitcase, charger + 2 batteries
- Intuitive e1 software



Heavy or bulky part marking



Marking parts outdoors



Marking parts of various
geometries